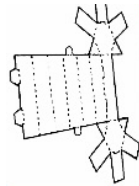
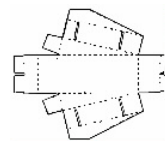


4 Arches

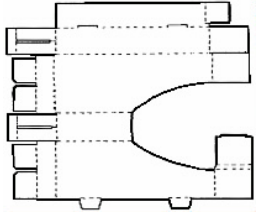


6 Turrets

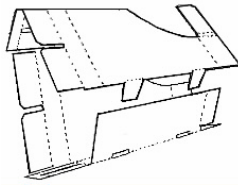


4 Drawbridges

Castle Arch

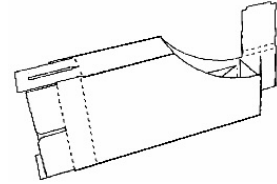


1

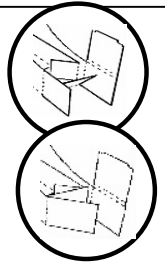


Fold arch along score lines inserting tabs into slots.

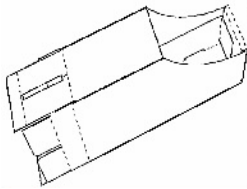
2



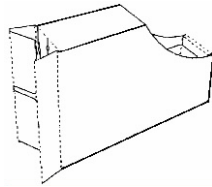
Starting at the short end, fold the small flap in out of the way. Then fold the bottom flap up, followed by the piece on the left, then the logo flap. Tuck the logo flap in at the bottom and cover with the small piece you folded first.



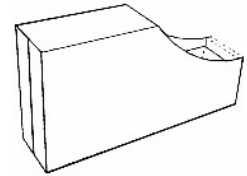
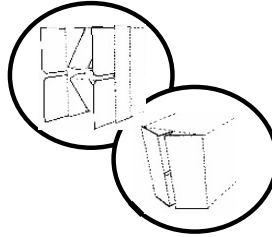
3



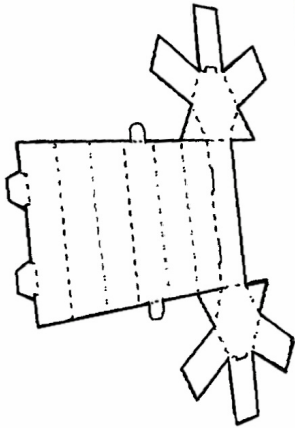
Short end completed.



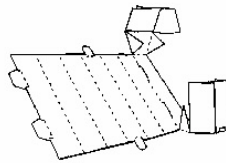
Fold along the score lines of the two slotted pieces, then bring the folded edges together to meet in the middle. Insert outer flaps into the slots.



Castle Turret

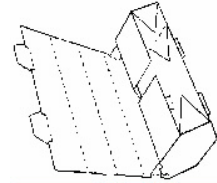


1



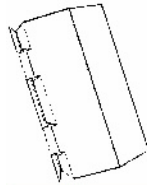
Fold all end flaps & tabs along score lines in.

2

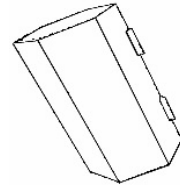


Roll along vertical score lines inserting top & bottom tabs into slots.

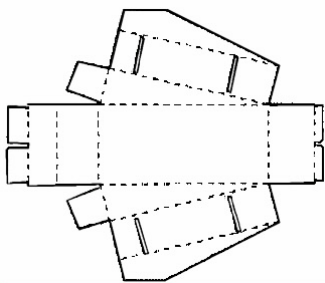
3



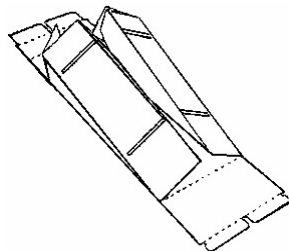
Continue rolling & insert side tabs into slots.



Castle Drawbridge

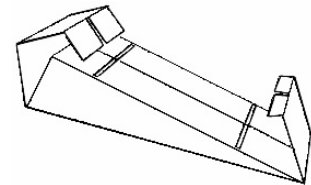


1



Fold along the score lines of the slotted sides. Bring the folded edges together to meet in the middle.

2



Fold end flaps in, and insert tabs into slots.

